



LEASEHOLD

Apartment

WOOD LANE, DAGENHAM, RM9 5TB

Guide Price

£210,000

FEATURES

- FIRST FLOOR
- GOOD SIZE LOUNGE
- BATHROOM W/C
- PRIVATE GARDEN
- ONE BEDROOM
- FITTED KITCHEN
- GAS CENTRAL HEATING
- COUNCIL TAX A



1 Bedroom Apartment located in Dagenham

HALL/LOBBY

cupboard, stairs to first floor landing.

LANDING

Window, access to boarded loft and ladder.

LOUNGE

13 x 12

Window to front.

KITCHEN

10 x 7'8

Cupboard with combi boiler, fitted base/wall units, window to front.

BEDROOM

14 x 9'7

Fitted wardrobes, window to rear.

BATHROOM

Three piece suite, window.

EXTERIOR

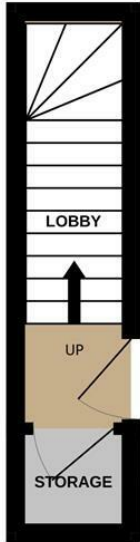
Private back garden.

We routinely refer potential purchasers to Move with Us Ltd. It is your decision whether you choose to deal with Move with Us Ltd. In making that decision, you should know that we receive an annual payment benefits from Move with Us Ltd, equating to approximately £314.48 per referral.

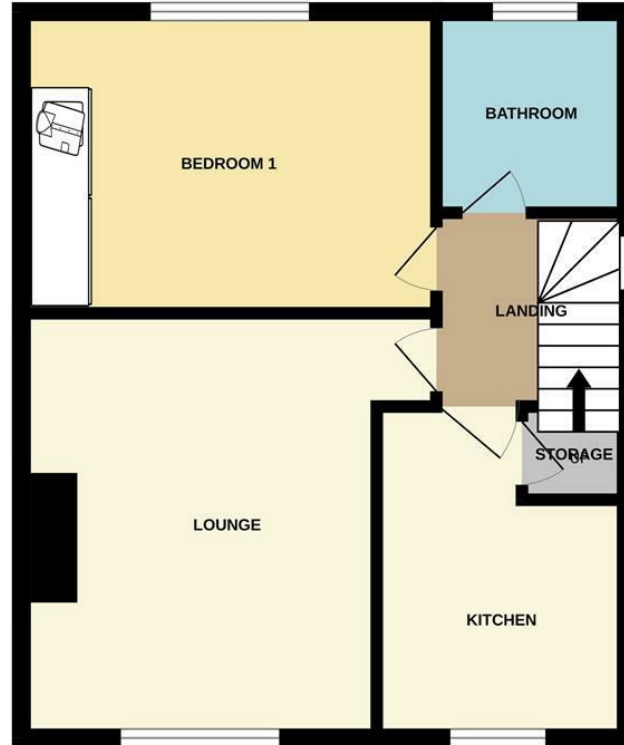


DAGENHAM SALES | STEPS ESTATE AGENTS, 298 HEATHWAY, DAGENHAM, ESSEX, RM10 8LU

GROUND FLOOR



FIRST FLOOR



Whilst every attempt has been made to ensure the accuracy of the floorplan contained here, measurements of doors, windows, rooms and any other items are approximate and no responsibility is taken for any error, omission or mis-statement. This plan is for illustrative purposes only and should be used as such by any prospective purchaser. The services, systems and appliances shown have not been tested and no guarantee as to their operability or efficiency can be given.
Made with Metropix ©2025

Call us on

020 8593 5933

dagenham@steps.me.uk

www.steps.me.uk

Council Tax Band

A

Energy Efficiency Rating		Current	Potential
Very energy efficient - lower running costs			
(92 plus) A			
(81-91) B			
(69-80) C			
(55-68) D			
(39-54) E			
(21-38) F			
(1-20) G			
Not energy efficient - higher running costs			
England & Wales		EU Directive 2002/91/EC	

Agents Note: Whilst every care has been taken to prepare these particulars, they are for guidance purposes only. All measurements are approximate and are for general guidance purposes only and whilst every care has been taken to ensure their accuracy, they should not be relied upon and potential buyers are advised to recheck the measurements.

